

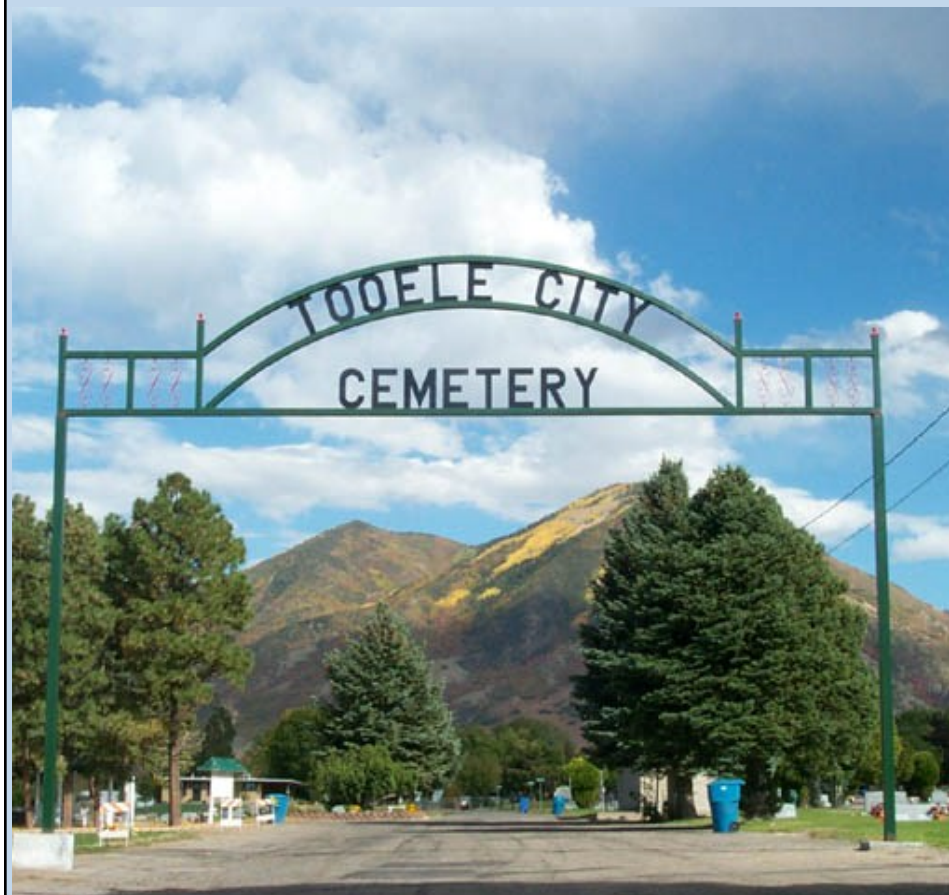
Tooele City Cemetery

361 South 100 East
Tooele, Utah 84074
(435) 882-4241
tooelecity.gov

**This publication is not all inclusive. For current and complete city code and administrative policy please visit our website at tooelecity.gov or contact the Tooele City Cemetery Records Office.*

Tooele City Cemetery

2026 Information Guide



361 South 100 East
Tooele, Utah 84074
(435) 882-4241
tooelecity.gov

Welcome

Welcome to the beautiful Tooele City Cemetery! We are happy to serve you. We are committed to providing an environment that is peaceful and inviting to all who enter the Cemetery grounds.

The Tooele City Cemetery is located at 361 South 100 East. The Cemetery is situated between 200 South and Skyline Drive and 100 East to 200 East. The Cemetery can be accessed from entrances off of 100 East and 200 East. The Cemetery grounds are open 365 days a year from 6:00 a.m. to 10:00 p.m.

Our Cemetery rests on 23 acres of well-manicured and maintained land, with approximately 19,400 burial plots with another two acres to be developed.



Records Office Hours: 9:00 a.m.—1:00 p.m. Monday— Friday
Cemetery Personnel are available: 7:00 a.m.—3:30 p.m. Monday—Friday

If you have questions about the Cemetery call the
Records Office at 435-882-4241
Or visit our website at tooelecity.gov
Records Office located at 255 South 100 East, Tooele, UT

Cemetery Supervisor can be reached at
435-274-8003
Monday—Friday, 7:00 a.m.—3:30 p.m.

**This publication is not all inclusive. For current and complete city code and administrative policy please visit our website at tooelecity.gov or contact the Tooele City Cemetery Records Office.*

Cemetery Fees

	<u>Resident</u>	<u>Non-Resident</u>
Right to Burial:	\$600	\$1,000
Right to Burial (Blocks 15-20):		
Flat Stone Sites:	\$600	\$1,000
Upright Stone Sites:	\$900	\$1,300
Right to Burial (Designated Baby/Cremation):	\$250	\$300
Opening and Closing:		
Regular Grave:	\$300	\$300
Designated Baby Grave/Cremation:	\$200	\$200
Cremation-Two or more in same grave:	\$300	\$300
Disinterment of Body:	\$1,000	\$1,000
Disinterment of Cremation:	\$500	\$500
Saturday Burial Fee:	\$300	\$300
After Hours Fee (after 2:30 p.m.):	\$200	\$200
Certificate Transfer:	\$50	\$50
Monument or Marker Setting:		
Flat or Flush Stones:	\$50	\$50
Upright Stones:	\$50	\$50

Buy Back Burial Rights: City will pay the owner of the burial rights the original purchase price. If there is no proof of purchase price the city will pay \$150 per grave space.

Payment Options

We accept the following forms of payment: cash, check, Visa, MasterCard, and Discover.

Temporary Markers

The Cemetery will provide a temporary marker for a new burial where no existing monument or marker exists. The temporary marker will remain for six months or until a permanent headstone is placed, whichever occurs first. No other temporary markers are allowed.

Burials

Tooele City Cemetery allows one full size burial and up to four cremation burials on one full size grave space.

Clean-Up

All funeral flowers will be cleaned up one week following the services.

At the discretion of the cemetery staff, flowers and decorations that become worn or show weather damage will be removed and discarded.

Weather permitting, cemetery personnel will perform a clean-up of the Cemetery grounds on the following dates:

- ~ Beginning the last full week of March—allowing one week for entire complete clean-up: All decorations in the Cemetery will be discarded including items within concrete border/lawnmower strip and vases.
- ~ Beginning the Monday following Memorial Day—allowing one week for entire clean-up: Flowers in vases will be allowed to remain, all other decorations in the Cemetery will be discarded.

Tooele City Cemetery is not responsible for any decorations lost, stolen or damaged.



Monuments and Markers

The following are maximum measurements and include the required minimum 4" lawnmower strip around the monument or marker:

Single Flat: 32" Deep X 44" Long X 3" High

Double Flat: 32" Deep X 90" Long X 3" High

Single Tall: 32" Deep X 44" Long X 36" High

Double Tall: 32" Deep X 90" Long X 36" High

Monuments and Markers on Cremation and/or Infant Grave Spaces (in designated sections) must be no larger than 16" Deep X 24" Long X 3" High, this includes the required 4" lawnmower strip. No vases are allowed.

Secondary monument or markers on any grave space must be no larger than 20" Deep X 24" Long, this includes the required 4" lawnmower strip and must be set at ground level, flush with the lawnmower strip. Secondary monument or markers cannot have any vases and must be contained within the existing grave space.

All monuments and markers must be made of granite, marble or bronze.

Vases are only allowed on monuments or markers that are placed at the head of the burial space. No more than two vases will be allowed on the base or lawnmower strip of any primary monument or marker. Permanent upright vases cannot be placed on the lawnmower strip. In ground vases are allowed in the lawnmower strip. Separate in ground vases that were not originally included in the monument or marker and/or 4" lawnmower strip are not allowed. No vases are allowed on cremation/baby graves, or secondary headstones. Open vase holes in the lawnmower strip shall not be allowed. Vases made of glass, porcelain, or pottery will not be allowed in the Cemetery and cannot be glued to headstones. No other items can be permanently attached to the monument, marker or lawnmower strip.

A lawnmower strip is required to extend 4" beyond all monuments or markers. The lawnmower strip may be made of granite, marble or concrete. The lawnmower strip must be flush with the ground, at least 4" wide beyond the monument or marker and at least 4" thick. No monument, marker, permanent upright vase or other item may be placed on, or extend into, the 4" lawnmower strip. Open vase holes in the lawnmower strip shall not be allowed. In ground vases are allowed in the lawnmower strip.

Before ordering a monument or marker please contact the Tooele City Cemetery office or visit tooelecity.gov for regulations concerning monuments, markers and vases.

2026 Holiday Schedule

Our Cemetery will be closed for burials on the following observed holidays:

New Year's Day	Thursday, January 1, 2026
Human Rights Day	Monday, January 19, 2026
President's Day	Monday, February 16, 2026
Memorial Day Weekend	Friday-Monday, May 22-25, 2026
National Freedom Day	Monday, June 15, 2026
Independence Day	Friday & Saturday, July 3 & 4, 2026
Pioneer Day	Friday & Saturday, July 24 & 25, 2026
Labor Day	Monday, September 7, 2026
Columbus Day	Monday, October 12, 2026
Veterans Day	Wednesday, November 11, 2026
Thanksgiving Day	Thursday-Saturday, November 26-28, 2026
Christmas	Thursday-Saturday, December 24-26, 2026
New Year's Day	Friday & Saturday, January 1 & 2, 2027

The Tooele City Cemetery is closed for burials on Sundays.

General Rules

Vases and/or trinkets made of glass, porcelain or pottery will not be allowed in the cemetery and cannot be permanently attached to monuments and markers. Porcelain photos and emblems/medallions will be allowed. Such items must be permanently affixed to the monument or marker in a way that will not interfere with the mowing and maintenance of the Cemetery. No other items can be permanently attached to the monument, marker or mow-strip.

No wire, nails, hangers, steel rods, tent stakes, etc. will be allowed to secure decorations to the ground, and will be removed to protect mowers during daily maintenance.

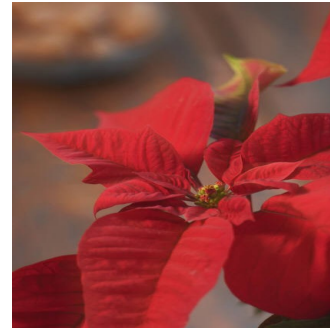
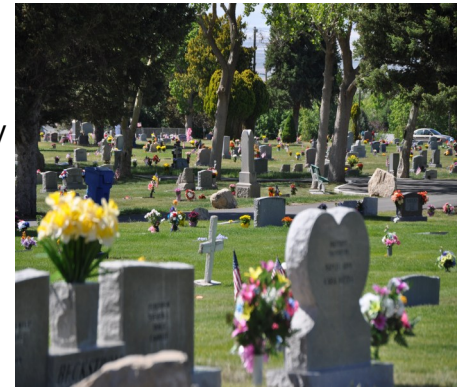
No planting or excavating is permitted in the Cemetery.



Decorations

Summer: (April 1st – October 31st)

All decorations must be placed directly on the monument, marker or concrete border/mow strip. No decorations are allowed in the grass around the monument or marker during these months. To accommodate mowing, decorations outside of the concrete border/mow strip will be immediately removed and discarded. No shepherd hooks are allowed at all during these months. Artificial flowers are only allowed if placed in permanent vases attached to the monument, marker or concrete border/mowing strip. (Please see information specific to Memorial Day below.)



Winter: (November 1st – March 31st)

All types of decorations are acceptable during these months as long as they are not damaging the Cemetery grounds or obtrusive to neighboring plots. Grave decorations will not be removed during these months unless they become worn or show weather damage. A complete cleanup of the cemetery will take place the last full week of March.

Memorial Day Decorations

Memorial Day decorations will be allowed to be placed on the grass outside of the concrete border/mow strip four days prior and six days after Memorial Day. A complete clean-up of the Cemetery will take place the Monday following Memorial Day and allowing one week for entire clean-up.

